



PPECB

CITRUS

PRE-SEASON MEETING

INSPECTION VALUE

STREAM

17 MARCH 2009

PRESENTED BY:
IDA VILJOEN



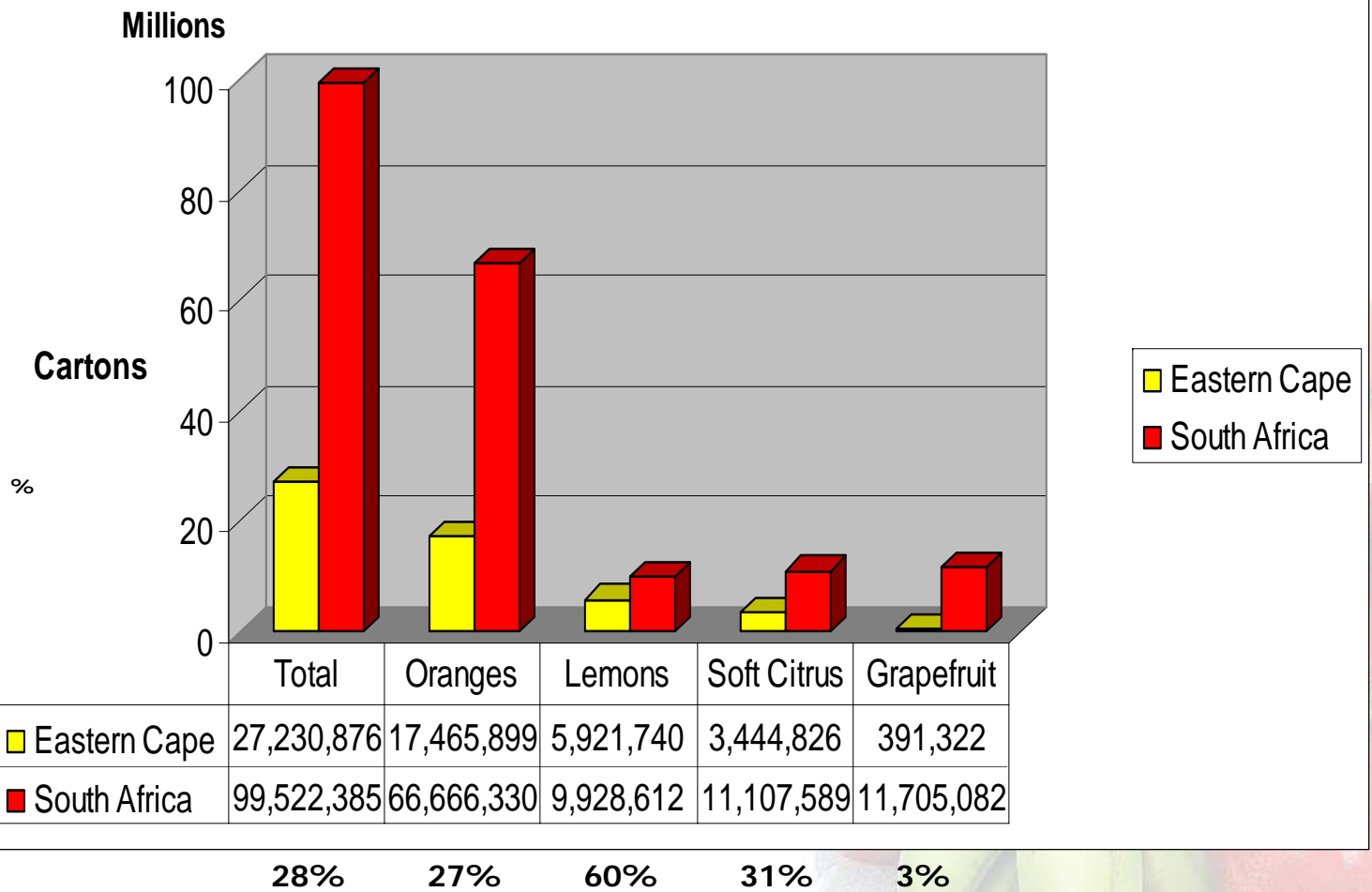
PPECB Mission statement

To build competitive capacity in our people
and systems in Industries we serve in
order to **instill world-wide confidence**
in South African Perishable Products.



CITRUS FRUIT 2008

Total cartons inspected

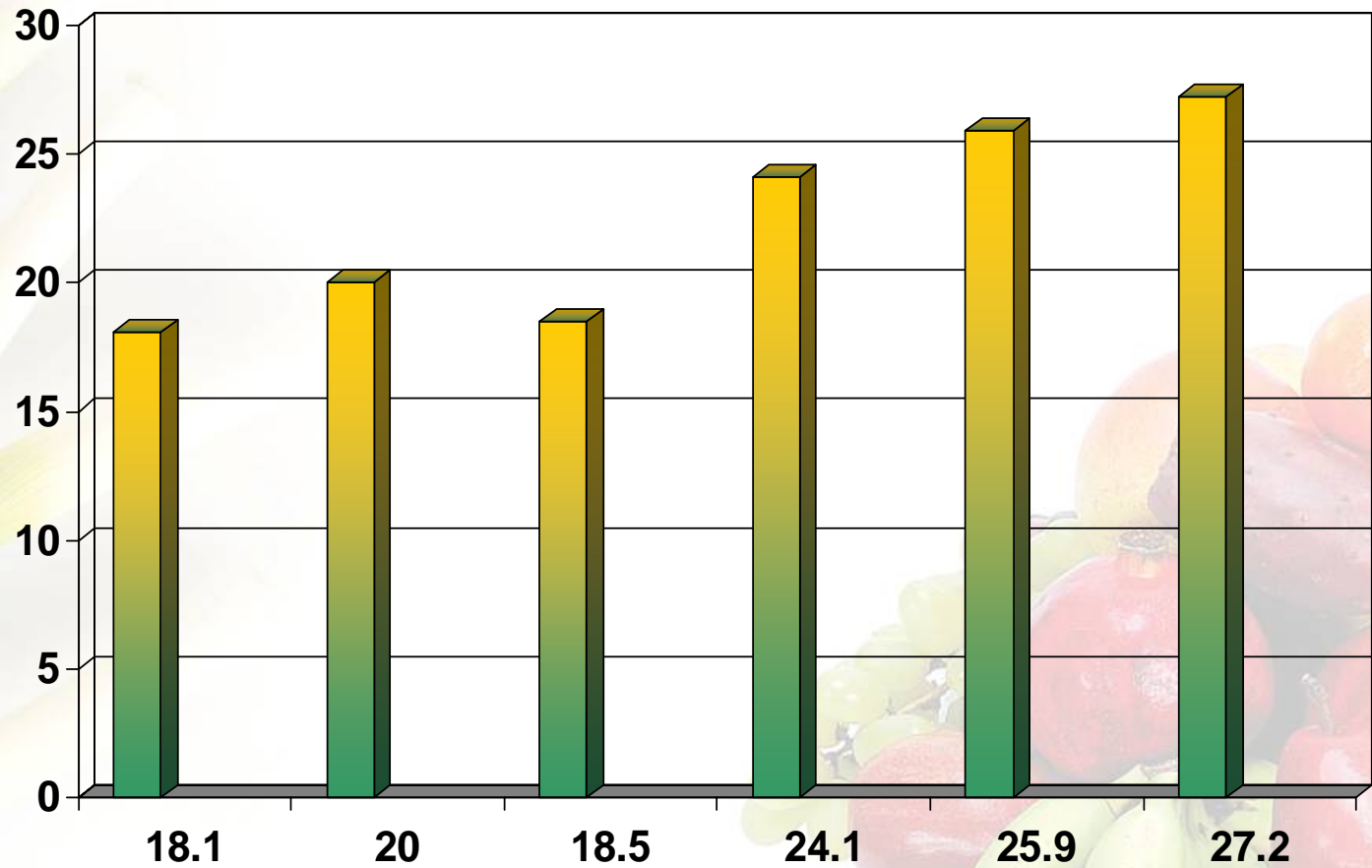


CITRUS FRUIT

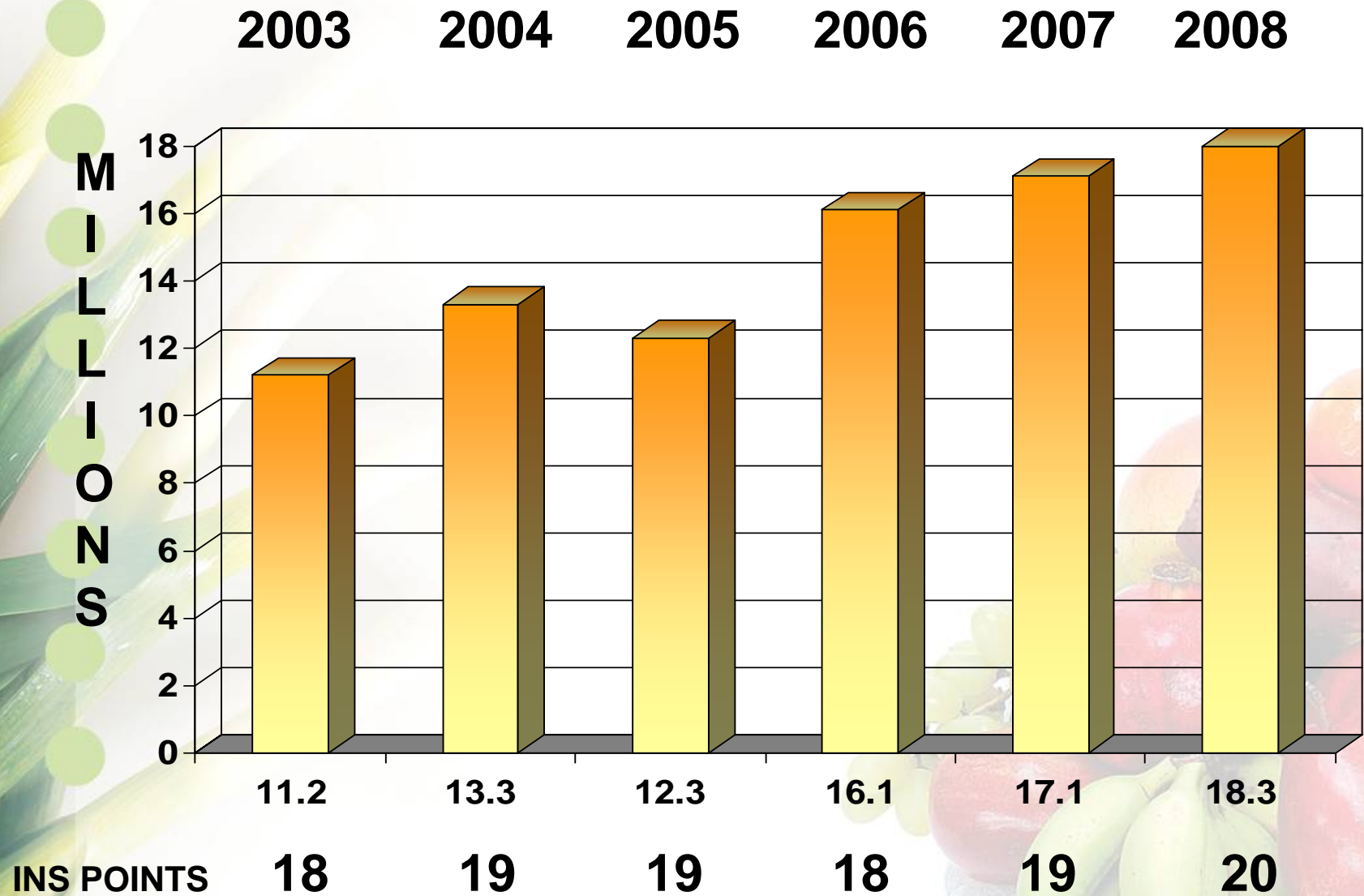
EASTERN CAPE - INSPECTED

2003 2004 2005 2006 2007 2008

M
I
L
L
I
O
N
S



CITRUS FRUIT: SUNDAYS RIVER VALLEY



CITRUS FRUIT: SUNDAYS RIVER VALLEY – 2008

TOTAL INSPECTED: 18, 329, 611

**SOFT
CITRUS**

1,579,165

GRAPEFRUIT

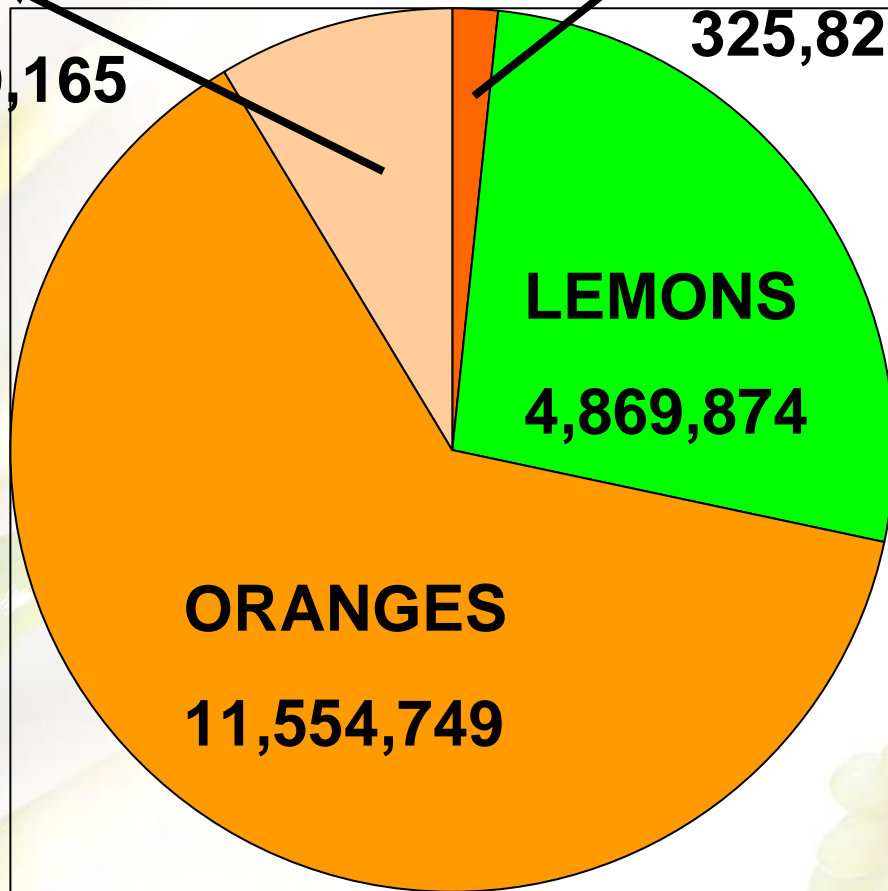
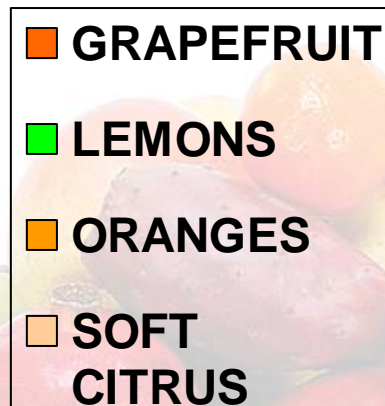
325,823

LEMONS

4,869,874

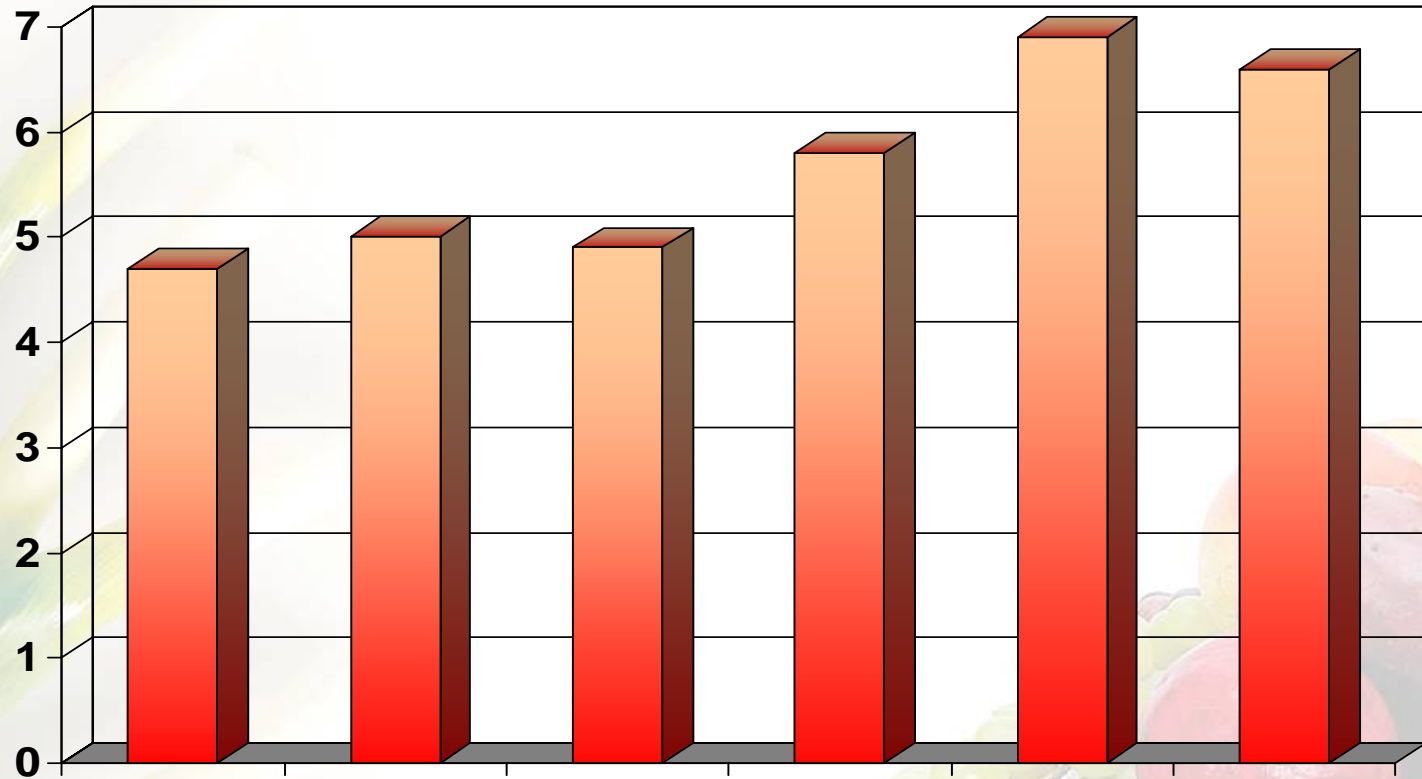
ORANGES

11,554,749



CITRUS FRUIT: PATENSIE / HANKEY

2003 2004 2005 2006 2007 2008



M
I
L
L
I
O
N
S

INSP
POINTS

4.7

5

4.9

5.8

6.9

6.6

16

17

21

21

21

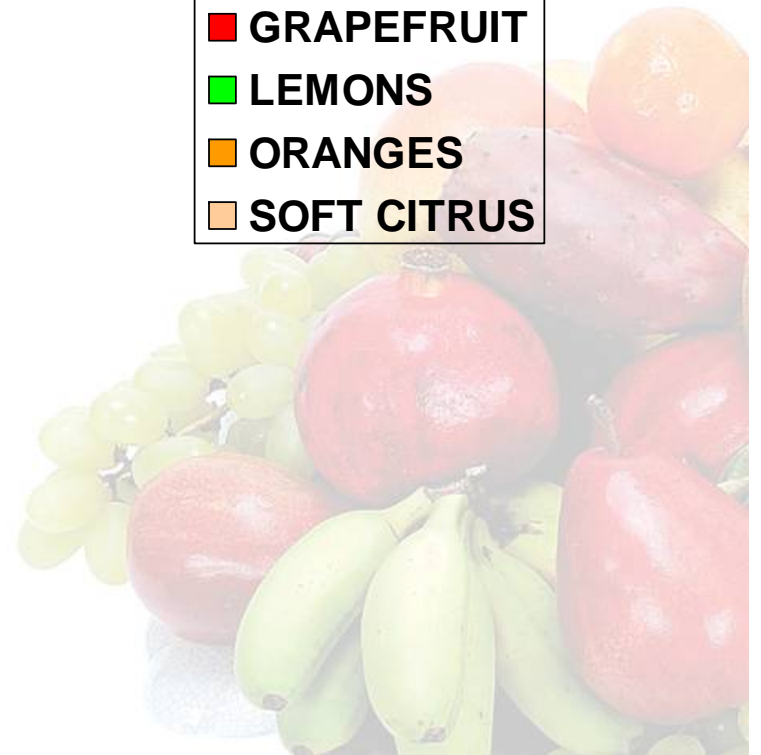
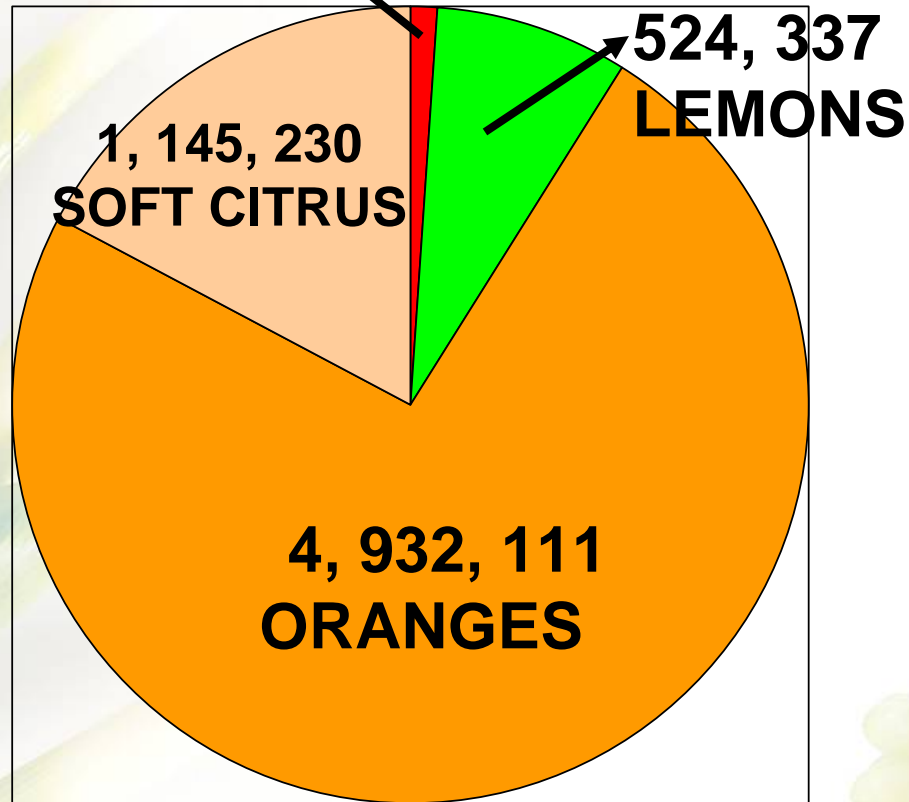
22

CITRUS FRUIT: PATENSIE/HANKEY - 2008

TOTAL INSPECTED: 6, 674, 266

72, 588

GRAPEFRUIT

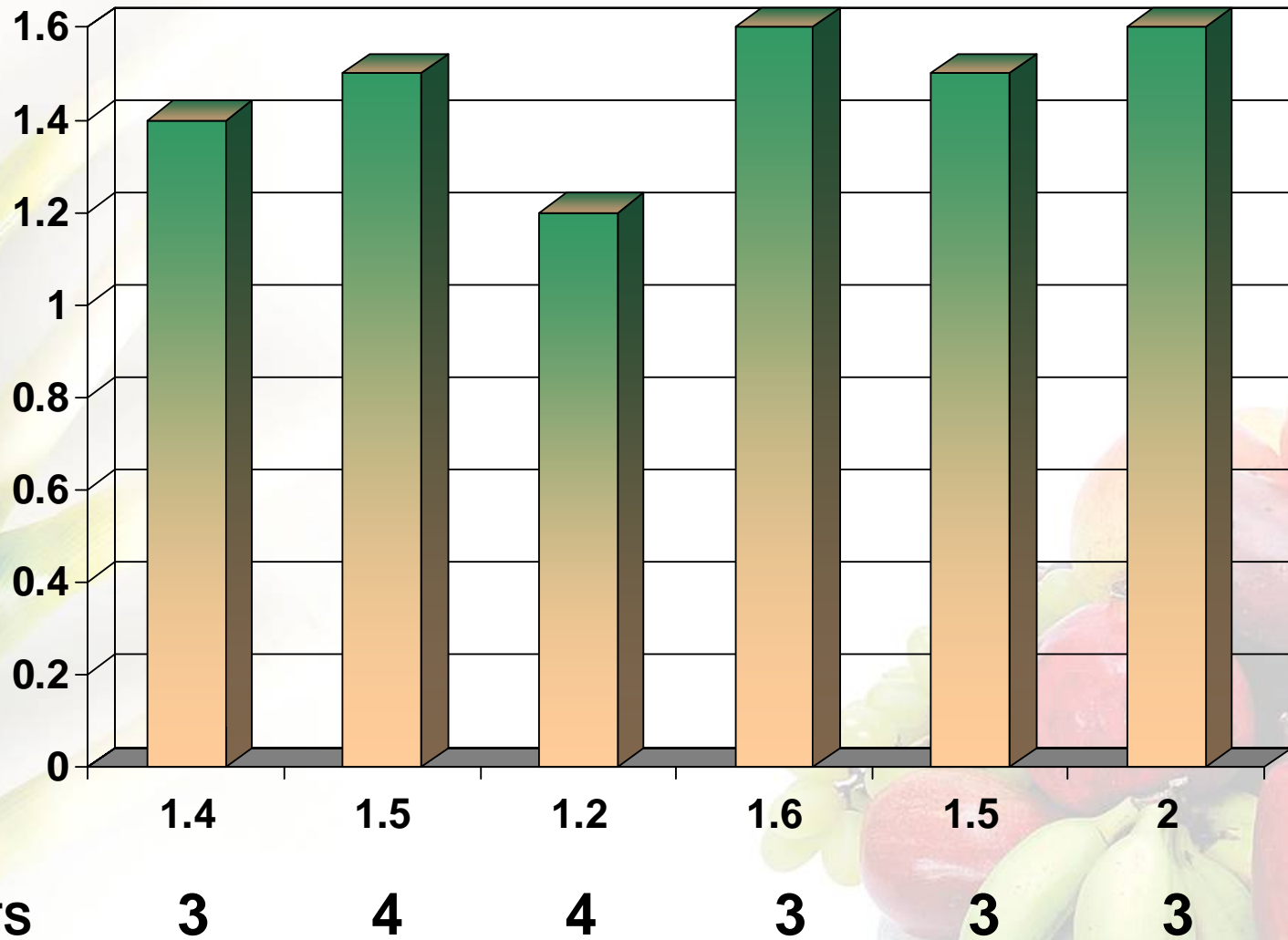


CITRUS FRUIT: FORT BEAUFORT

2003 2004 2005 2006 2007 2008

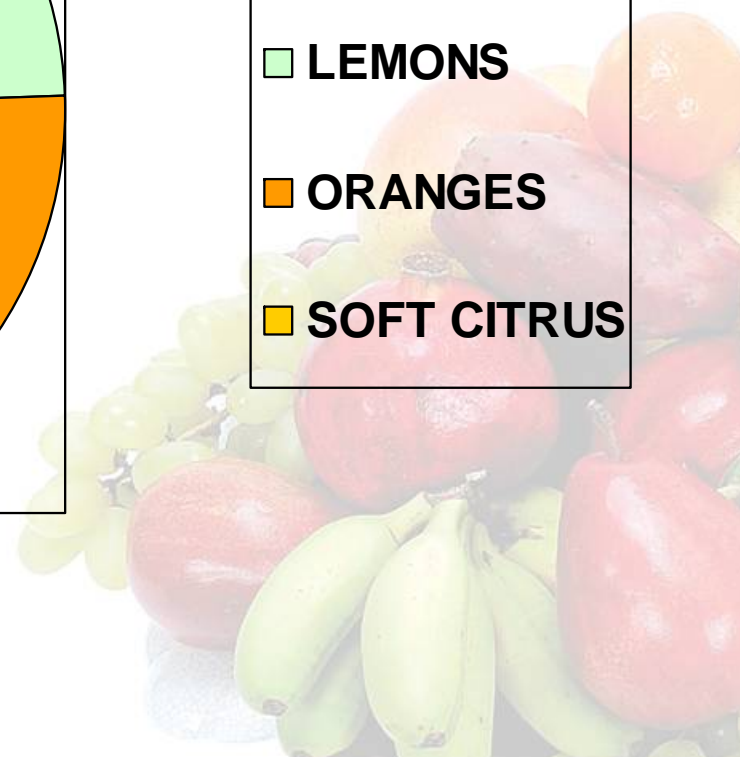
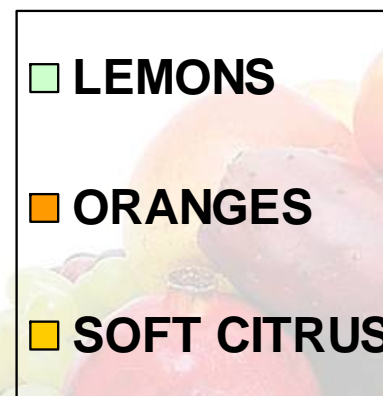
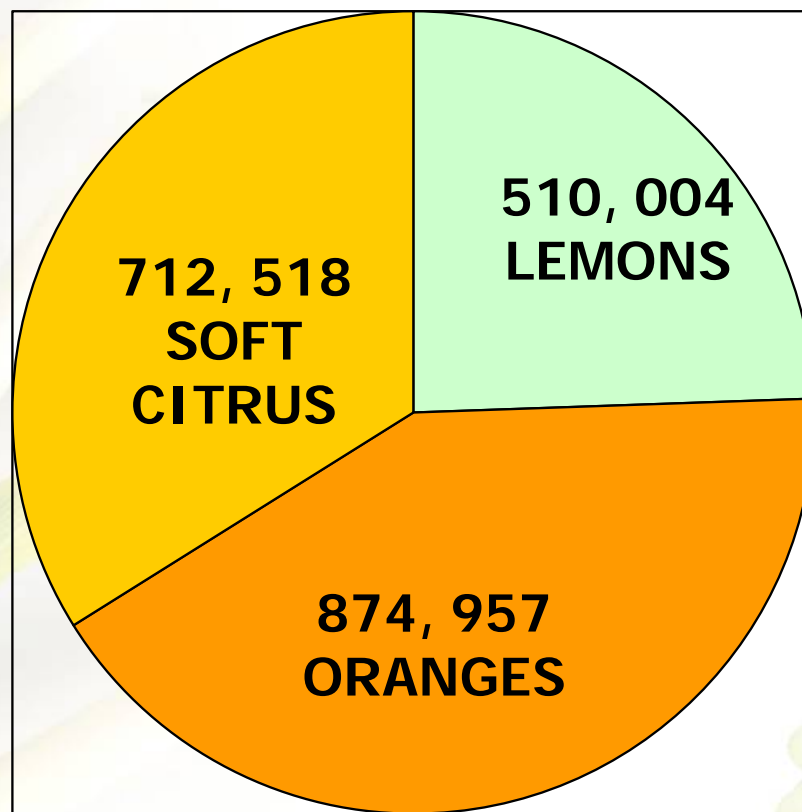
M
I
L
L
I
O
N
S

INSP
POINTS



2008 CITRUS FRUIT : FORT BEAUFORT

TOTAL INSPECTED – 2, 097, 479

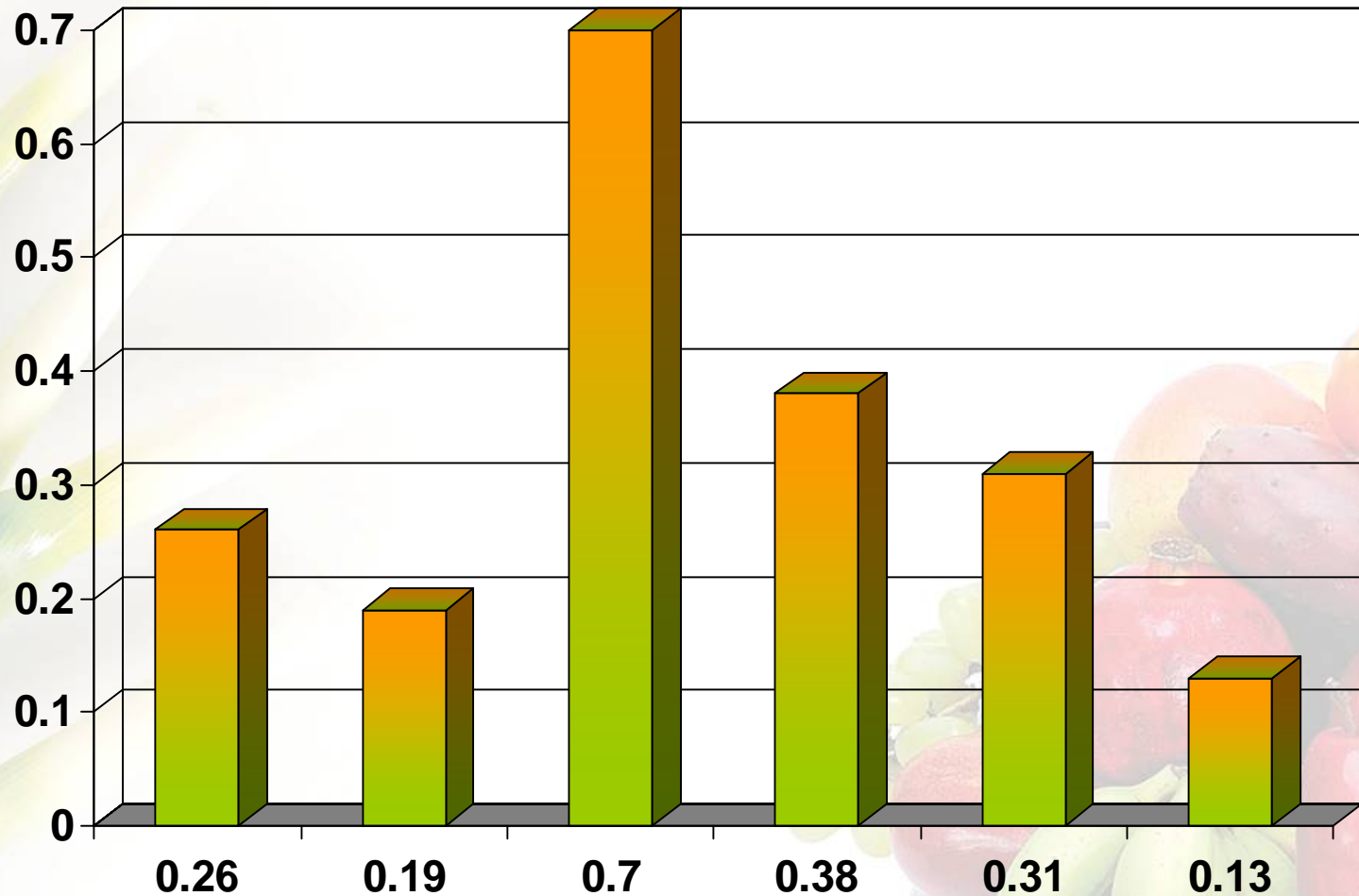


CITRUS FRUIT: OTHER AREAS

PE, KNYSNA, LANGKLOOF & EAST LONDON

2003 2004 2005 2006 2007 2008

M
I
L
L
I
O
N
S

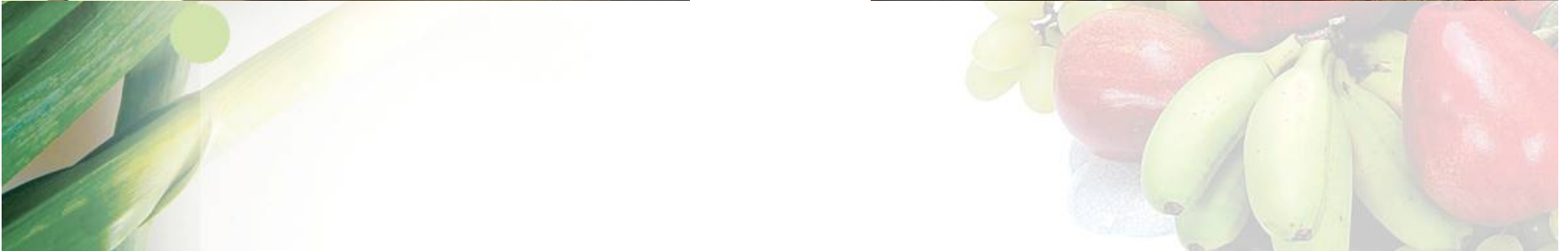


PROBLEMS EXPERIENCED (1) **DURING THE PAST SEASON**

- 1. LATE BOOKINGS**
- 2. INDUSTRIAL CARTON BINS NOT STRONG ENOUGH**
- 3. POOR PALLET QUALITY**
- 4. BARK/FUNGUS GROWTH ON WOODEN PALLETS AND BINS**
- 5. OVERHANGS OVER LOADING FACILITIES**
- 6. LOADS NOT READY FOR CONTAINERS –**
 - LAST MINUTES ADJUSTMENTS OF PALLET HEIGHTS**
 - PALLET LOCATION**

Problems experienced during the previous season

- Changing of pallets after inspection



PROBLEMS EXPERIENCED (2)

7. CREDIT NOTES – WRONG CLIENT BILLED

8. ADDITIONAL OVERTIME AND KILOMETER RATES WILL BE CHARGED FOR CONTAINERS LOADED AFTER HOURS, OVER WEEK-ENDS OR ON PUBLIC HOLIDAYS - LOADING POINT IS RESPONSIBLE FOR PAYMENT OF THESE FEES OR IF ARRANGED DIFFERENTLY

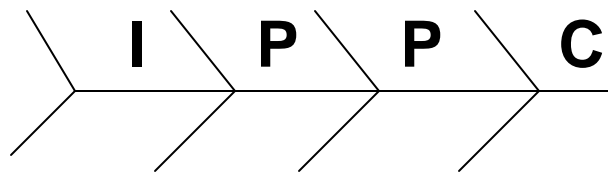
9. PROOF OF INSPECTION / CONSIGNMENT NOTES

INTAKE POINTS AT PACKHOUSES NOT FULLY REGISTERED TO PALTRACK/FIVE DEGREES - NO SECOND CONSIGNMENT NOTES WILL BE SIGNED.

THE MANUFACTURING, MARKING AND TREATMENT OF WOOD PACKING MATERIAL

- ISPM 15 – INTERNATIONAL STANDARD FOR PHYTOSANITARY MATTERS

1. IPPC (INTERNATIONAL PLANT PROTECTION COUNCIL) MARKING ON PALLETS



2. DATE WHEN TREATED

3. REGISTRATION CODE: ZA 000

4. TYPE OF TREATMENT: HT (HEAT TREATED)

MB (METHYL BROMIDE TREATED)

5. DEBARKED WOOD: DB

6. ALL MARKINGS MUST BE PERMANENT. NO ORANGE OR RED INKS.

7. MARKINGS AT LEAST ON 2 SIDES

- IMPLEMENTATION DATE – 01/01/2005

- ENFORCEMENT DATE – 01/03/2005 TO ALL COUNTRIES

- PPECB WILL CHECK AND REPORT NON-CONFORMITIES

Post Harvest Handling of fruit

- Amount of days between harvesting and packing
- Secondary sun-burn
- Cold Chain Management



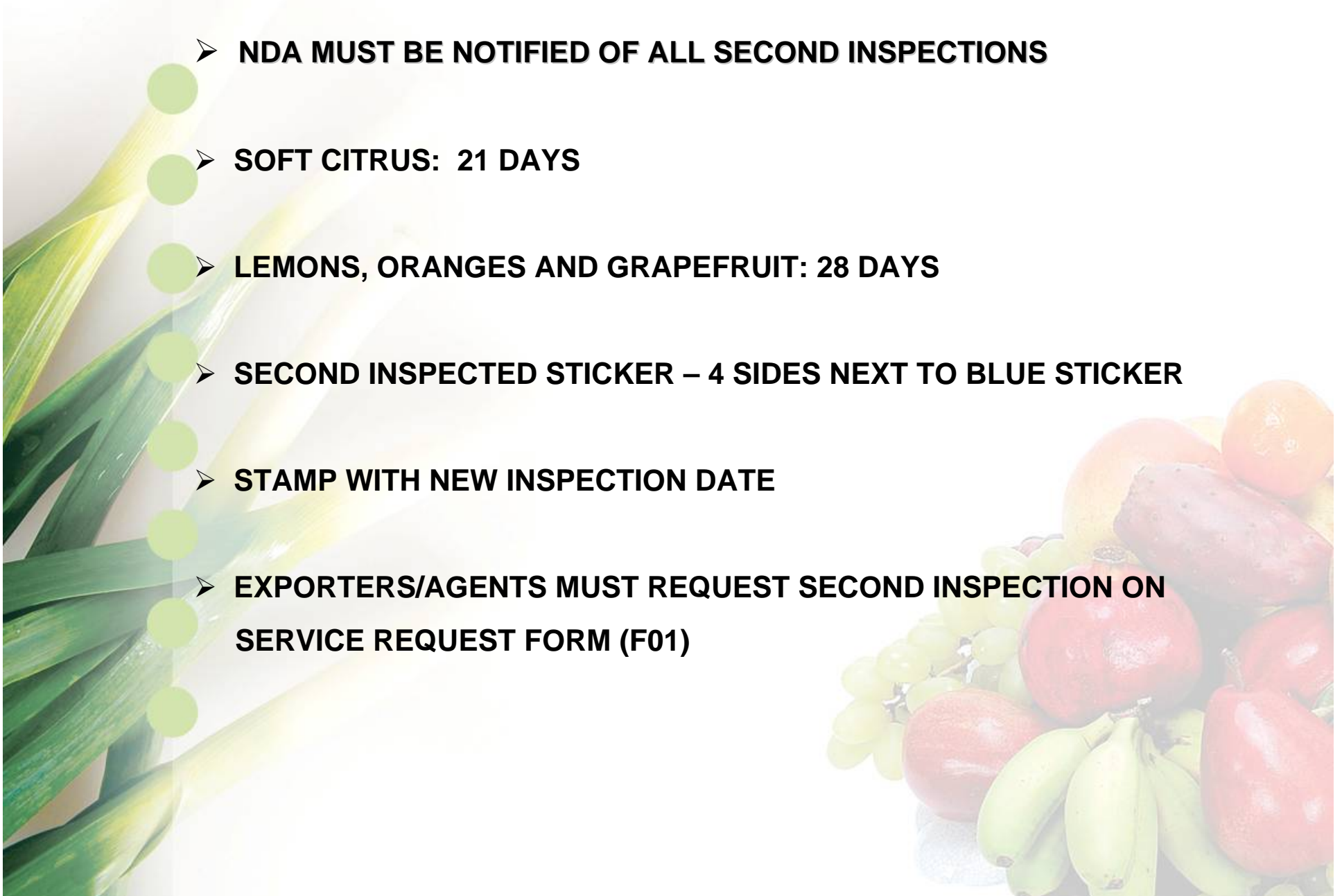
COLOUR MANAGEMENT

- Throughout the whole Cycle



SECOND INSPECTIONS: CITRUS FRUIT

- **NDA MUST BE NOTIFIED OF ALL SECOND INSPECTIONS**
- **SOFT CITRUS: 21 DAYS**
- **LEMONS, ORANGES AND GRAPEFRUIT: 28 DAYS**
- **SECOND INSPECTED STICKER – 4 SIDES NEXT TO BLUE STICKER**
- **STAMP WITH NEW INSPECTION DATE**
- **EXPORTERS/AGENTS MUST REQUEST SECOND INSPECTION ON SERVICE REQUEST FORM (F01)**



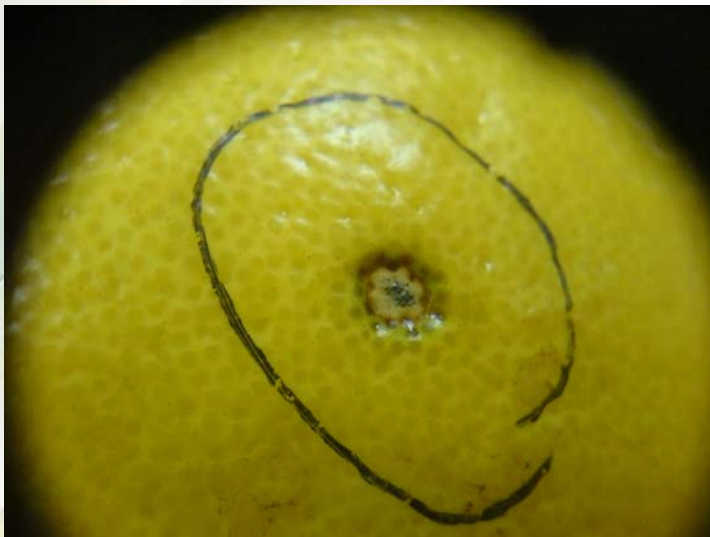
Critical Points 2009

- **ZERO TOLLERANCE**
INCORRECT OR
INCOMPLETE MARKING
REQUIREMENTS FOR
SPECIAL MARKETS



Critical points 2009

- **NEW** Blackspot procedure



PPECB'S MANDATE

1. AGRICULTURAL PRODUCT STANDARDS ACT, 1990. NO 119 OF 1990

- 1.1 REGULATIONS REGARDING EXPORT CONTROL.**
- 1.2 STANDARDS AND REQUIREMENTS AS PER PRODUCT.**
- 1.3 MRL-STANDARD OPERATING PROCEDURE.**
- 1.4 EXPORT CERTIFICATION – STANDARD OPERATING PROCEDURE.**

2. PERISHABLE PRODUCTS EXPORT CONTROL ACT 9 OF 1983.

- 2.1 REGULATIONS RELATING TO THE EXPORT OF PERISHABLE PRODUCTS.**
- 2.2 HANDLING PROCEDURES.**

3. AGRICULTURAL PRODUCT STANDARDS ACT 1990. NO 119 OF 1990.

- 3.1 STANDARDS REGARDING FOOD HYGIENE AND SAFETY OF REGULATED AGRICULTURAL FOOD PRODUCTS OF PLANT ORIGIN INTENDED FOR EXPORT – NOTICE 707 OF 13 MAY 2005.**
- 3.2 CHECKLISTS AND COMPLIANCE CRITERIA PER FBO.**

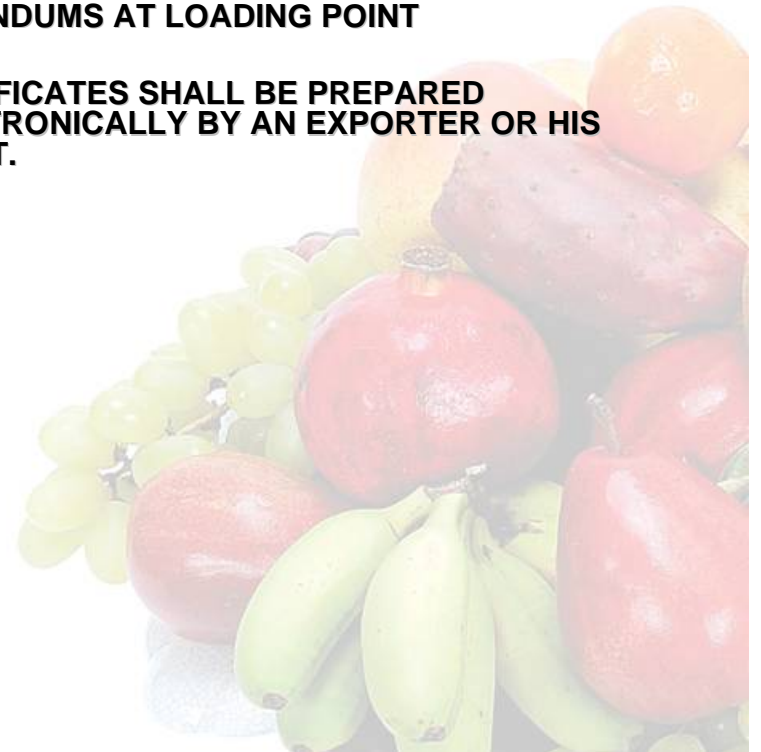
EXPORT CERTIFICATION

▪ ADDENDUMS

- **TO BE FULLY COMPLETED AT LOADING POINT.**
- **INSPECTOR MUST VERIFY AND SIGN ADDENDUMS AT LOADING POINT.**
- **INFO OF ADDENDUM, CONSIGNMENT NOTES AND EXPORT CERTIFICATE MUST CORRESPOND**
- **INITIAL DATE OF INSPECTION OR MOST AGED DATE**
- **IF CERTIFICATE TO BE ISSUED AT ANOTHER DESTINATION- ENDORSE ADDENDUM**
- **COMMODITY AND VARIETY – FULLY WRITTEN OUT**

▪ EXPORT CERTIFICATES

- **“CERTIFYING OFFICER” ONLY INSPECTOR AUTHORISED IN WRITING TO SIGN OFFICIAL EXPORT CERTIFICATES.**
- **EXPORT CERTIFICATES MAY BE ISSUED UP TO 5 WORKING DAYS AFTER THE VESSEL HAS SAILED INSPECTOR MUST VERIFY AND SIGN ADDENDUMS AT LOADING POINT**
- **CERTIFICATES SHALL BE PREPARED ELECTRONICALLY BY AN EXPORTER OR HIS AGENT.**



RESULT



Consumer confidence



Thank You

